

NOW AVAILABLE



LAND ON I-26 AVAILABLE! EXCELLENT LOCATION - NORTH

Unique Features:

- Excellent development parcel with frontage on I-26.
- Level and ready to build.
- Many possible uses - restaurant with liquor, hotel, bank, drug store.
- Three lots available.

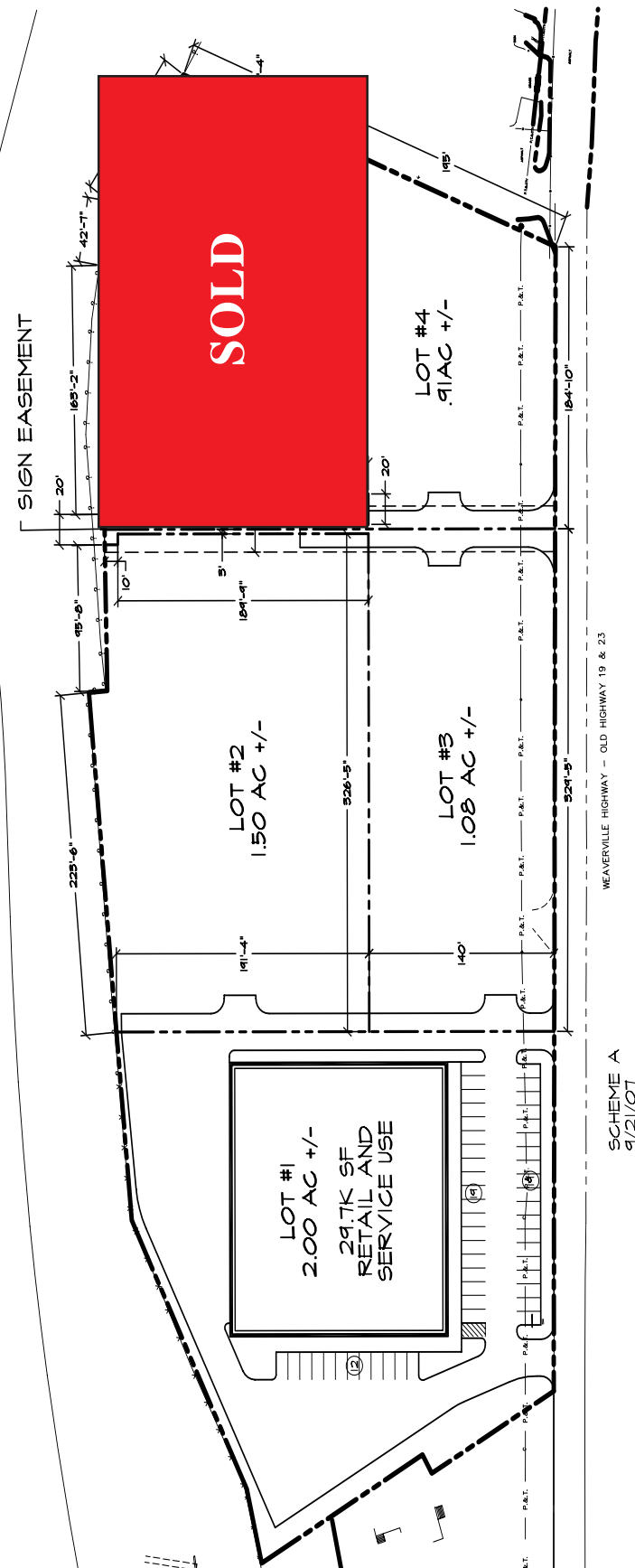


Contact:
George W. Morosani,
Listing Agent

274-4111

456 Weaverville Hwy.
Woodfin, NC

POSSIBLE SITE LAYOUT



WEAVERVILLE HIGHWAY - OLD HIGHWAY 19 & 23

SCHEME A
9/21/07

1293 Hendersonville Road
Suite 21
Asheville, NC 28803
(828) 277-7410
TENNIS COURT FURNITURE
FURNITURE
FURNITURE

**LAND AVAILABLE WITH I-26 EXPOSURE
456 WEAVERVILLE HWY.
WOODFIN, NORTH CAROLINA**

DIRECTIONS: Take I-26 north to the New Stock Road exit. Turn right at the light. Property on the right.

SITE/BUILDING DATA: Great location on I-26. Three lots available up to 1.5 acres. Can be developed into many possible uses - restaurant (liquor allowed), hotel, bank, drugstore.

ZONING: Town of Woodfin

UTILITIES: All utilities available.

SALES PRICE: \$800,000/Acre - Subject to Size

CONTACT: George W. Morosani, Listing Agent.

ALL INFORMATION FURNISHED REGARDING PROPERTY FOR SALE OR LEASE IS FROM SOURCES DEEMED RELIABLE, BUT NO WARRANTY OR REPRESENTATION IS MADE AS TO THE ACCURACY THEREOF AND THE SAME IS SUBMITTED SUBJECT TO ERRORS, OMISSIONS, PRIOR SALE OR LEASE, CHANGE OR WITHDRAWAL WITHOUT NOTICE. NO LIABILITY OF ANY KIND IS TO BE IMPOSED ON THE BROKER HEREIN.

Suite 201-Forest Center, 932 Hendersonville Road
Asheville, North Carolina 28803-1761
(828) 274-4111 Fax (828) 274-8831

