

NOW AVAILABLE



LAND ON I-26 AVAILABLE! EXCELLENT LOCATION - NORTH

Unique Features:

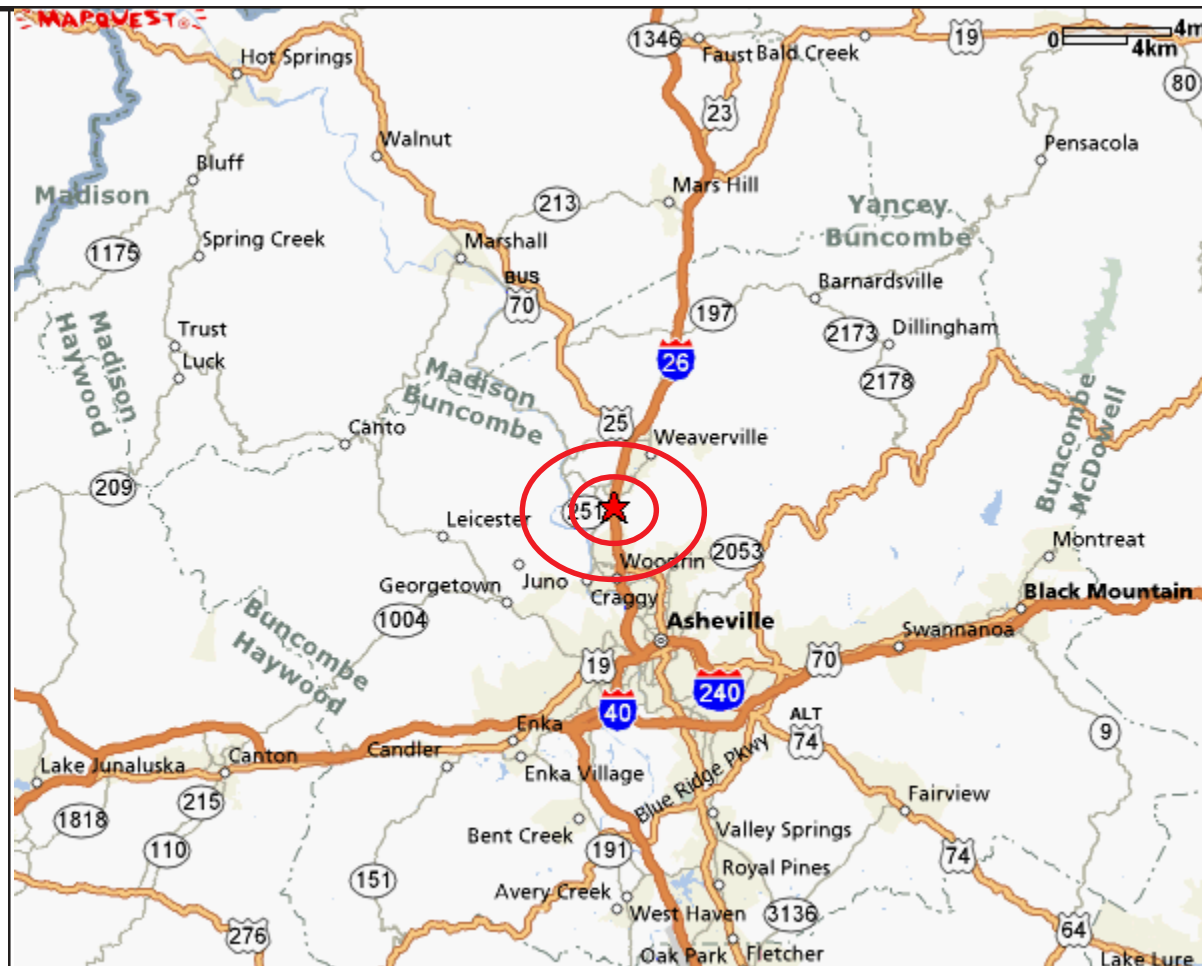
- Excellent development parcel with frontage on I-26.
- Level and ready to build.
- Many possible uses - restaurant with liquor, hotel, bank, drug store.
- Two lots available.



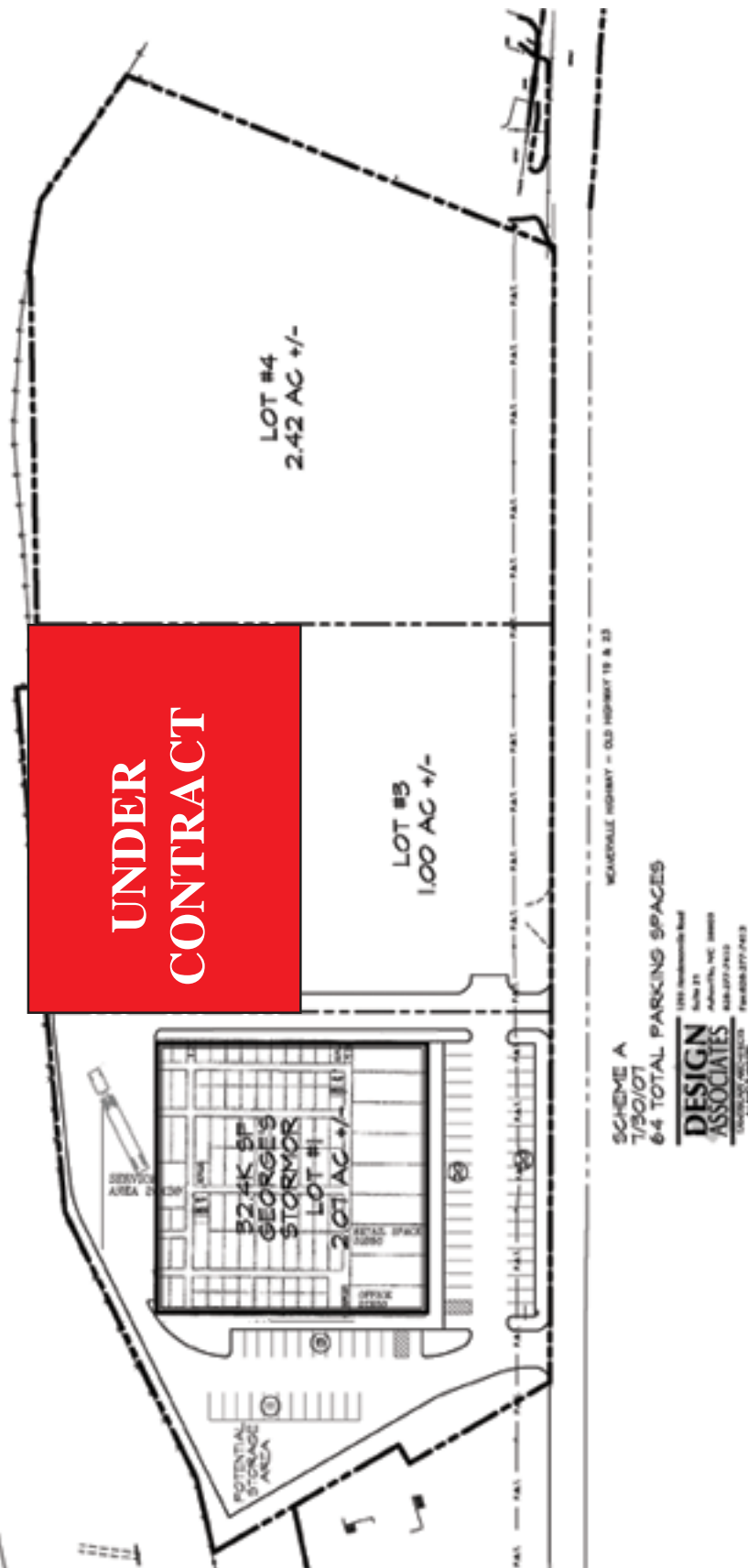
Contact:
George W. Morosani,
Listing Agent

274-4111

456 Weaverville Hwy.
Woodfin, NC



POSSIBLE SITE LAYOUT



UP TO 3.42 ACRES AVAILABLE 456 WEAVERVILLE HWY. WOODFIN, NORTH CAROLINA

DIRECTIONS: Take I-26 north to the New Stock Road exit. Turn right at the light. Property on the right.

SITE/BUILDING DATA: Great location on I-26. Up to 3.42 Acres available. Can be developed into many possible uses - restaurant (liquor allowed), hotel, bank, drugstore.

ZONING: Town of Woodfin

UTILITIES: All utilities available.

SALES PRICE: \$800,000/Acre

CONTACT: George W. Morosani, Listing Agent.

ALL INFORMATION FURNISHED REGARDING PROPERTY FOR SALE OR LEASE IS FROM SOURCES DEEMED RELIABLE, BUT NO WARRANTY OR REPRESENTATION IS MADE AS TO THE ACCURACY THEREOF AND THE SAME IS SUBMITTED SUBJECT TO ERRORS, OMISSIONS, PRIOR SALE OR LEASE, CHANGE OR WITHDRAWAL WITHOUT NOTICE. NO LIABILITY OF ANY KIND IS TO BE IMPOSED ON THE BROKER HEREIN.

Suite 201-Forest Center, 932 Hendersonville Road
Asheville, North Carolina 28803-1761
(828) 274-4111 Fax (828) 274-8831

