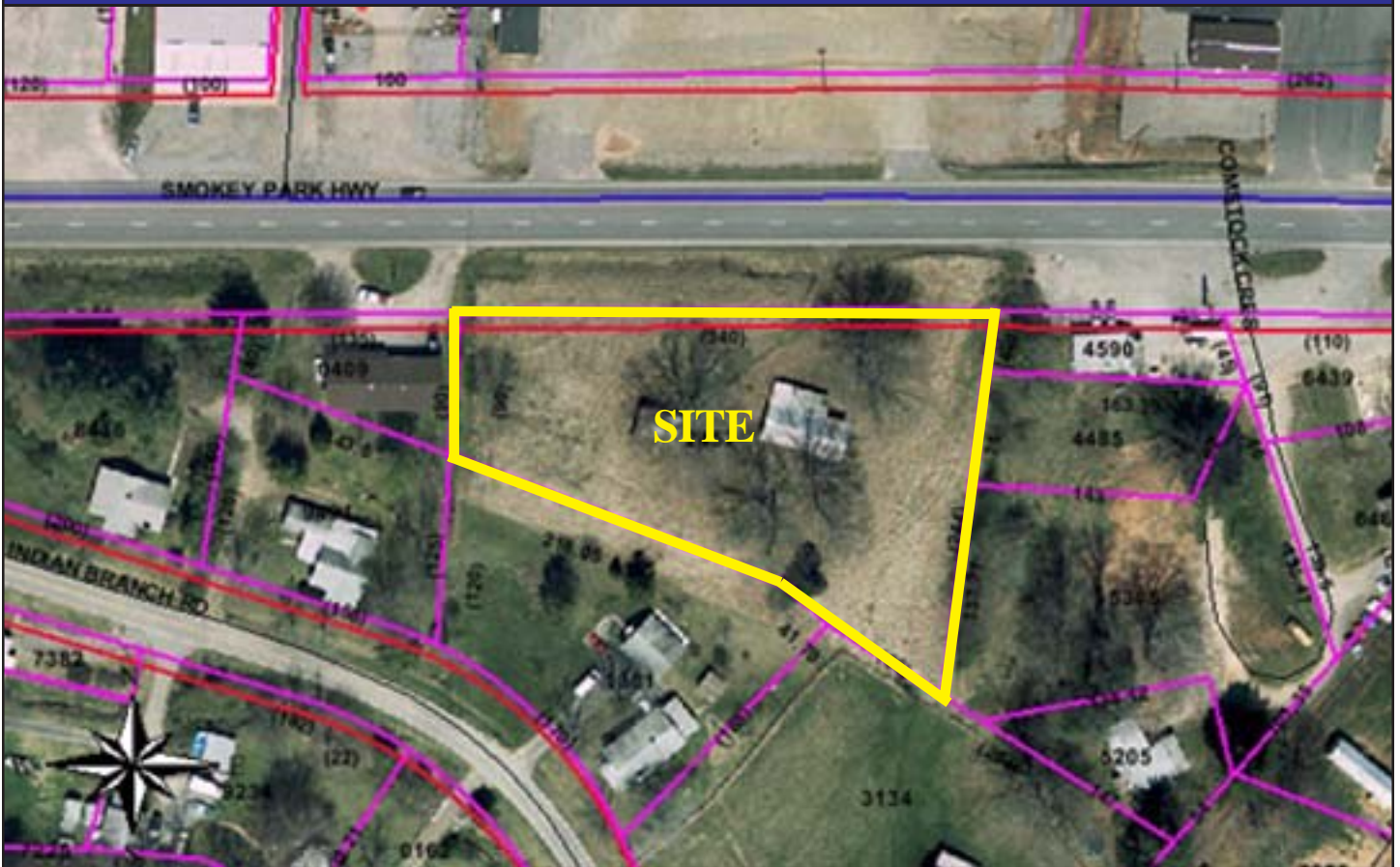


NEW LISTING



1.27 ACRES COMMERCIAL

EXCELLENT LOCATION

SALES PRICE:

\$350,000



Contact:

Lisa Stephens,
Listing Agent

274-4111

1800 Smokey Park Hwy.
Candler, NC 28715
PIN# 8697.16-93-2452

Unique Features:

- Excellent location on Smokey Park Hwy. just west of the new Biltmore Lake Village.
- Many possible uses.
- Relatively level and ready to build.

FOR SALE
1.27 ACRES COMMERCIAL
1800 SMOKEY PARK HWY.
CANDLER, NC

DIRECTIONS: Interstate 40 to Exit 44. Turn right at stop light and go approximately 4 miles. Just past the intersection with Old Hwy. 19/23 on the left and Asheville Crane on the right.

SITE/BUILDING DATA: 1.27 acres of buildable commercial property available immediately.

UTILITIES: Electrical, water, and sewer.

SALE PRICE: \$350,000

TO SHOW: Show anytime.

CONTACT: Lisa Stephens, Listing Agent

ALL INFORMATION FURNISHED REGARDING PROPERTY FOR SALE OR LEASE IS FROM SOURCES DEEMED RELIABLE, BUT NO WARRANTY OR REPRESENTATION IS MADE AS TO THE ACCURACY THEREOF AND THE SAME IS SUBMITTED SUBJECT TO ERRORS, OMISSIONS, PRIOR SALE OR LEASE, CHANGE OR WITHDRAWAL WITHOUT NOTICE. NO LIABILITY OF ANY KIND IS TO BE IMPOSED ON THE BROKER HEREIN.



Suite 201-Forest Center, 932 Hendersonville Road
Asheville, North Carolina 28803-1761
(828) 274-4111 Fax (828) 274-8831

