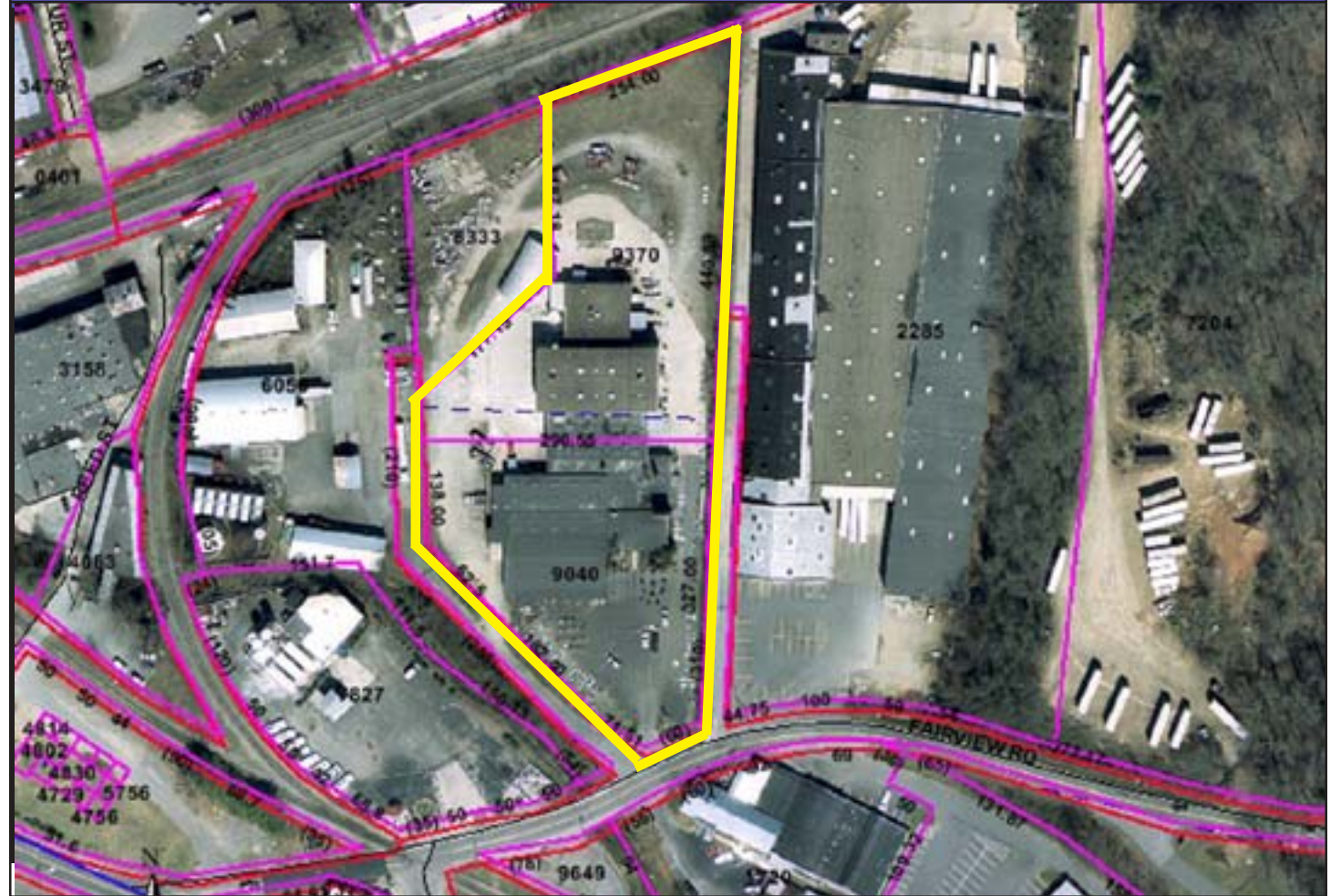


BILTMORE VILLAGE



34,000 SF ON +/-3.44 ACRES

EXCELLENT CENTRAL LOCATION

SALE PRICE:
\$2,900,000

Unique Features:

- ◆ Easy access to I-40
- ◆ Just Minutes from the Downtown Asheville in Biltmore Village
- ◆ Excellent redevelopment parcel.



Contact:
George W. Morosani,
Listing Agent

274-4111
PIN #s: 9648.20.70-9370/9040
6 Fairveiw Road, Asheville, NC



Suite 201 - Forest Center, 932 Hendersonville Road
Asheville, North Carolina 28803-1761
(828) 274-4111 Fax (828) 274-8831





FOR SALE
6 FAIRVIEW ROAD
ASHEVILLE, NORTH CAROLINA

DIRECTIONS: Biltmore Avenue to right on Sweeten Creek Road. Left onto Fairview Road. Property just on the left across railroad tracks.

SITE/BUILDING

DATA: Over 34,000 square feet of space on approximately 3.44 acres. Excellent parcel for redevelopment in the Biltmore Village area.

UTILITIES: All available.

SALE PRICE: \$2,900,000

TO SHOW: Appointment only. Call Listing Agent.

CONTACT: George W. Morosani, Listing Agent.



ALL INFORMATION FURNISHED REGARDING PROPERTY FOR SALE OR LEASE IS FROM SOURCES DEEMED RELIABLE, BUT NO WARRANTY OR REPRESENTATION IS MADE AS TO THE ACCURACY THEREOF AND THE SAME IS SUBMITTED SUBJECT TO ERRORS, OMISSIONS, PRIOR SALE OR LEASE, CHANGE OR WITHDRAWAL WITHOUT NOTICE. NO LIABILITY OF ANY KIND IS TO BE IMPOSED ON THE BROKER HEREIN.



Suite 201 - Forest Center, 932 Hendersonville Road
Asheville, North Carolina 28803-1761
(828) 274-4111 Fax (828) 274-8831

